



Big, bold and better than ever.

BBP® 85
LABEL PRINTER



The BBP®85 Sign

There's **BIG** and **BOLD**.

Then there's **BIG** and **BOLD** from Brady.

The BBP®85 Label Printer allows you to create 250mm labels in multiple colours, and it has an easier-than-ever interface that anyone on your team can use! No more complex, tedious design steps. No more ordering and waiting. Now you can just walk up and print... and instantly create high quality, multi-coloured visuals up to 250mm wide.



Big Output, Little Fuss

Create extra-large custom signs and labels right now! This printer has our fastest, easiest operating system, so anyone on your team can design visuals with little to no training. The ideal printer for multi-user Lean 5S and kaizen labelling events!

- Unmistakably large visuals up to 250mm wide
- Just walk up and print...it really is that easy!
- Large 7" touch-screen interface for stand-alone use, or print from your PC with MarkWare™ Software
- Timesaving label design apps to create pipe markers, safety signs, arc flash, GHS labels, and more!
- USB port for importing files, fonts and graphics



Bold Multi-Colour Printing

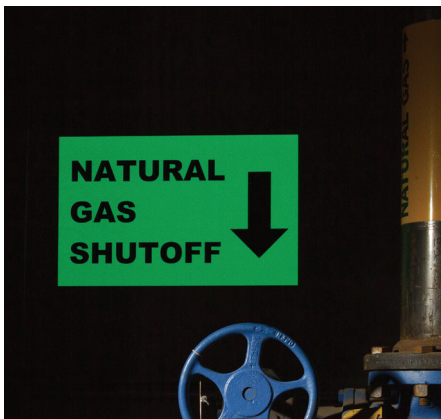
Get your message noticed with strong, colourful visuals. Print up to 4 colours on a single label for professional-looking, custom-made signs, labels and warnings that demand attention.

- Highly durable multi-colour thermal transfer printing
- Print common sign formats even faster using pre-printed sign header supplies
- Add more label creation flexibility with Markware™ Software (v3.9.3 and higher)
- Ethernet port for easy printer networking
- Wireless printing connectivity through a Brady Network Card

Don't Miss it!

See reverse side for part numbers and unfold for actual size label examples.

and Label Printer:

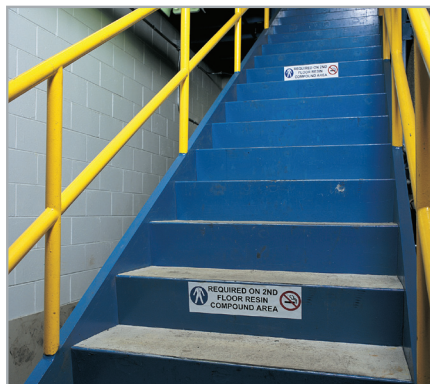
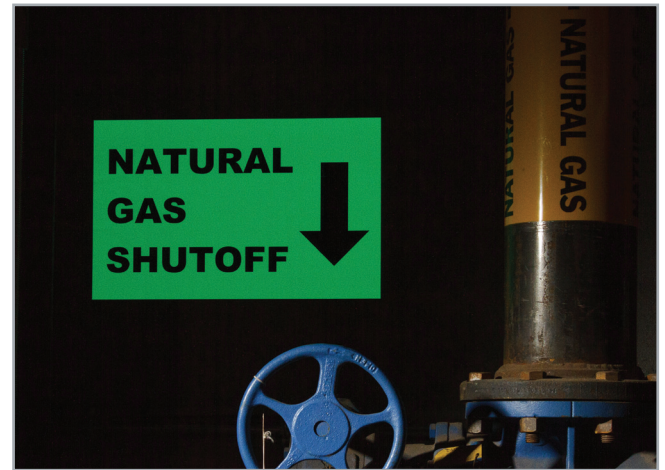


Best-of-the-Best Materials

Brady's sign and label materials lead the industry in durability and performance. They withstand harsh conditions, stay stuck on the most challenging surfaces and they simply last longer than other materials on the market. With the BBP®85 printer, you can choose from over one hundred supply options, including:

- Huge selection of 100mm wide to 250mm wide industrial grade outdoor materials
- Specialty materials including Reflective and Glow-in-the-Dark
- Pre-printed sign header supplies for GHS, arc flash and safety signs, which means only one print pass!
- Rigid sign panels: Adhere a printed sign to a panel for quick rigid signs you can hang or post nearly anywhere.

Big, bold and better



Don't Miss it!

See reverse side for part numbers and unfold for actual size label examples.

r than ever.



Indoor/Outdoor Vinyl (B-595)

For all-purpose facility and safety identification: our best industrial vinyl!

- Durable, low-shrink vinyl with our most aggressive adhesive and 8-10 year outdoor durability
- Conforms to irregular, curved, rough and highly textured surfaces (painted cinder blocks and wood, textured plastics, cast-iron and paper-jacketed pipes, powder-coated surfaces)

Service temp: -40°C to 82°C Application temp: -17°C to 82°C
Average Outdoor Durability: 8-10 year outdoor vinyl label durability.



Figure 33



Diagram	Part No.	Colour	Label Width A	Roll Length B	Labels Per Roll	Rec. Ribbon
Fig. 33	13538	White	101.6mm	15.2m	1 Roll (Cont)	13511
Fig. 33	13549	White	152.4mm	15.2m	1 Roll (Cont)	13511
Fig. 33	13551	White	203.2mm	15.2m	1 Roll (Cont)	13510
Fig. 33	13562	White	254mm	15.2m	1 Roll (Cont)	13510
Fig. 33	13539	Yellow	101.6mm	15.2m	1 Roll (Cont)	13511
Fig. 33	13550	Yellow	152.4mm	15.2m	1 Roll (Cont)	13511
Fig. 33	13552	Yellow	203.2mm	15.2m	1 Roll (Cont)	13510
Fig. 33	13563	Yellow	254mm	15.2m	1 Roll (Cont)	13510
Fig. 33	13540	Red	101.6mm	15.2m	1 Roll (Cont)	13513
Fig. 33	13601	Red	152.4mm	15.2m	1 Roll (Cont)	13513
Fig. 33	13553	Red	203.2mm	15.2m	1 Roll (Cont)	13512
Fig. 33	13610	Red	254mm	15.2m	1 Roll (Cont)	13512
Fig. 33	13541	Blue	101.6mm	15.2m	1 Roll (Cont)	13513
Fig. 33	13602	Blue	152.4mm	15.2m	1 Roll (Cont)	13513
Fig. 33	13554	Blue	203.2mm	15.2m	1 Roll (Cont)	13512
Fig. 33	13611	Blue	254mm	15.2m	1 Roll (Cont)	13512
Fig. 33	13542	Green	101.6mm	15.2m	1 Roll (Cont)	13513
Fig. 33	13603	Green	152.4mm	15.2m	1 Roll (Cont)	13513
Fig. 33	13555	Green	203.2mm	15.2m	1 Roll (Cont)	13512
Fig. 33	13612	Green	254mm	15.2m	1 Roll (Cont)	13512
Fig. 33	13543	Orange	101.6mm	15.2m	1 Roll (Cont)	13511
Fig. 33	13604	Orange	152.4mm	15.2m	1 Roll (Cont)	13511
Fig. 33	13556	Orange	203.2mm	15.2m	1 Roll (Cont)	13510
Fig. 33	13613	Orange	254mm	15.2m	1 Roll (Cont)	13510

Diagram	Part No.	Colour	Label Width A	Roll Length B	Labels Per Roll	Rec. Ribbon
Fig. 33	13544	Black	101.6mm	15.2m	1 Roll (Cont)	13513
Fig. 33	13605	Black	152.4mm	15.2m	1 Roll (Cont)	13513
Fig. 33	13557	Black	203.2mm	15.2m	1 Roll (Cont)	13512
Fig. 33	13614	Black	254mm	15.2m	1 Roll (Cont)	13512
Fig. 33	13545	Gold	101.6mm	15.2m	1 Roll (Cont)	13511
Fig. 33	13606	Gold	152.4mm	15.2m	1 Roll (Cont)	13511
Fig. 33	13558	Gold	203.2mm	15.2m	1 Roll (Cont)	13510
Fig. 33	13615	Gold	254mm	15.2m	1 Roll (Cont)	13510
Fig. 33	13546	Gray	101.6mm	15.2m	1 Roll (Cont)	13511
Fig. 33	13607	Gray	152.4mm	15.2m	1 Roll (Cont)	13511
Fig. 33	13559	Gray	203.2mm	15.2m	1 Roll (Cont)	13510
Fig. 33	13616	Gray	254mm	15.2m	1 Roll (Cont)	13510
Fig. 33	13547	Brown	101.6mm	15.2m	1 Roll (Cont)	13513
Fig. 33	13608	Brown	152.4mm	15.2m	1 Roll (Cont)	13513
Fig. 33	13560	Brown	203.2mm	15.2m	1 Roll (Cont)	13512
Fig. 33	13617	Brown	254mm	15.2m	1 Roll (Cont)	13512
Fig. 33	13548	Purple	101.6mm	15.2m	1 Roll (Cont)	13513
Fig. 33	13609	Purple	152.4mm	15.2m	1 Roll (Cont)	13513
Fig. 33	13561	Purple	203.2mm	15.2m	1 Roll (Cont)	13512
Fig. 33	13618	Purple	254mm	15.2m	1 Roll (Cont)	13512
Fig. 33	99498	Clear ////	101.6mm	15.2m	1 Roll (Cont)	13511
Fig. 33	99497	Clear ////	152.4mm	15.2m	1 Roll (Cont)	13511
Fig. 33	99496	Clear ////	203.2mm	15.2m	1 Roll (Cont)	13510
Fig. 33	99495	Clear ////	254mm	15.2m	1 Roll (Cont)	13510

U.S. Patent Nos. 5,318,370; 5,823,689; 6,570,602. Additional Patents Pending.

Pre-Printed Pre-Cut Blank Sign Headers (B-595)

For creating arc flash and safety warning labels in seconds.

- Faster way to design commonly used safety signs and labels
- Create custom, colourful safety labels using only a black ribbon
- Designed in accordance with Australian Standard® AS1319
- Indoor/outdoor grade material conforms to rough, highly textured, and “difficult to adhere to” surfaces

Service temp: -40°C to 82°C Application temp: -17°C to 82°C
Average Outdoor Durability: 8-10 years outdoor vinyl durability

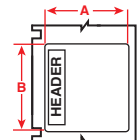


Figure 70

Diagram	Part No.	Legend	Label Height A	Label Width B	Labels Per Roll	Rec. Ribbon
Fig. 70	130754		254mm	355.6mm	40	13510
Fig. 70	130756		177.8mm	254mm	60	13510
Fig. 70	130755		101.6mm	152.4mm	95	13511
Fig. 70	130763		254mm	355.6mm	40	13510
Fig. 70	130765		177.8mm	254mm	60	13510
Fig. 70	130764		101.6mm	152.4mm	95	13511
Fig. 70	130760		254.0mm	355.6mm	40	13510
Fig. 70	130762		177.8mm	254.0mm	60	13510
Fig. 70	130761		101.6mm	152.4mm	95	13511
Fig. 70	132392		254mm	355.6mm	40	13510
Fig. 70	132393		177.8mm	254mm	60	13510
Fig. 70	132394		254mm	355.6mm	40	13510
Fig. 70	132395		177.8mm	254mm	60	13510

Pre-Printed GHS / CLP Chemical Labels (B-7569)

For GHS and hazard communication labelling.

- Blank labels with pre-printed red diamonds save time during label design
- 6 Diamond layouts that match templates in Markware™ Software, available in 2 sizes each
- Indoor/outdoor vinyl material withstands exposure to moisture, chemicals and handling
- Markware™ Software v3.9.1 or higher required

Service temp: 20°C to 75°C Application temp: 10°C to 75°C
Average Outdoor Durability: 3-5 years



Part No.	Legend	Label Height A	Label Width	Labels Per Row	Labels Per Roll	Rec. Ribbon
130766	L1 Diamond + Text	104.1mm	154.9mm	1	90	13511
130772	L1 Diamond + Text	154.9mm	210.8mm	1	70	13511
130767	L2 Diamond + Text	104.1mm	154.9mm	1	90	13511
130773	L2 Diamond + Text	154.9mm	210.8mm	1	70	13511
130768	L3A Diamond + Text	104.1mm	154.9mm	1	90	13511
130774	L3A Diamond + Text	154.9mm	210.8mm	1	70	13511
130769	L3B Diamond + Text	104.1mm	154.9mm	1	90	13511
130775	L3B Diamond + Text	154.9mm	210.8mm	1	70	13511
130770	L4A Diamond + Text	104.1mm	154.9mm	1	90	13511
130776	L4A Diamond + Text	154.9mm	210.8mm	1	70	13511
130771	L4B Diamond + Text	104.1mm	154.9mm	1	90	13511
130777	L4B Diamond + Text	154.9mm	210.8mm	1	70	13511



GHS/CLP Label Module included in MarkWare™ Software

- 18 Pre-formatted label layouts with built-in GHS symbols
- Labels are auto-populated based on selected hazard statements and GHS symbols
- Prompts for additional variable data and second language option

Low-Halide Polyester (B-569)

For labelling stainless steel and smooth surfaces.

- Low-halide content for labelling stainless steel pipes and surfaces
- Applies best to very smooth surfaces and is ideal for mounting to rigid panels

Service temp: -40°C to 100°C Application temp: -17°C to 100°C
Average Outdoor Durability: 3-5 years

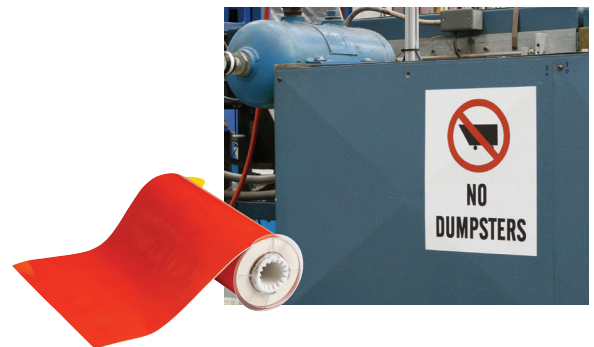


Diagram	Part No.	Colour	Label Width A	Roll Length B	Labels Per Roll	Rec. Ribbon
Fig. 33	13564	Clear ///	101.6mm	15.2m	1 Roll (Cont)	13511
Fig. 33	13568	Clear ///	152.4mm	15.2m	1 Roll (Cont)	13511
Fig. 33	13572	Clear ///	177.8mm	15.2m	1 Roll (Cont)	13510
Fig. 33	13576	Clear ///	254mm	15.2m	1 Roll (Cont)	13510
Fig. 33	13565	White	101.6mm	15.2m	1 Roll (Cont)	13511
Fig. 33	13569	White	152.4mm	15.2m	1 Roll (Cont)	13511
Fig. 33	13573	White	177.8mm	15.2m	1 Roll (Cont)	13510
Fig. 33	13577	White	254mm	15.2m	1 Roll (Cont)	13510
Fig. 33	13566	Yellow	101.6mm	15.2m	1 Roll (Cont)	13511
Fig. 33	13570	Yellow	152.4mm	15.2m	1 Roll (Cont)	13511
Fig. 33	13574	Yellow	177.8mm	15.2m	1 Roll (Cont)	13510
Fig. 33	13578	Yellow	254mm	15.2m	1 Roll (Cont)	13510
Fig. 33	13567	Orange	101.6mm	15.2m	1 Roll (Cont)	13511
Fig. 33	13571	Orange	152.4mm	15.2m	1 Roll (Cont)	13511
Fig. 33	13575	Orange	177.8mm	15.2m	1 Roll (Cont)	13510
Fig. 33	13579	Orange	254mm	15.2m	1 Roll (Cont)	13510
Fig. 33	99167	Ochre	101.6mm	15.2m	1 Roll (Cont)	13511
Fig. 33	99168	Ochre	152.4mm	15.2m	1 Roll (Cont)	13511
Fig. 33	99169	Ochre	177.8mm	15.2m	1 Roll (Cont)	13510
Fig. 33	99170	Ochre	254mm	15.2m	1 Roll (Cont)	13510



Figure 33

Retro Reflective Tape (B-584)

For highly reflective identification that shines back brightly when struck by light.

- Ideal for labelling outdoor metal utility poles, pedestals, jobsite equipment and roof-top equipment especially in low light

Service temp: -40°C to 70°C | Average Outdoor Durability: 4 to 6 years
Application temp: -17°C to 70°C (yellow & orange), 10°C to 70°C (silver)



Diagram	Part No.	Colour	Label Width A	Roll Length B	Labels Per Roll	Rec. Ribbon
Fig. 33	13580	Silver	101.6mm	10.0m	1 Roll (Cont)	13511
Fig. 33	13585	Silver	177.8mm	10.0m	1 Roll (Cont)	13510
Fig. 33	13590	Silver	254mm	10.0m	1 Roll (Cont)	13510
Fig. 33	51584	Yellow	101.6mm	10.0m	1 Roll (Cont)	13511
Fig. 33	51585	Yellow	177.8mm	10.0m	1 Roll (Cont)	13510
Fig. 33	51586	Yellow	254mm	10.0m	1 Roll (Cont)	13510
Fig. 33	13645	Orange	101.6mm	10.0m	1 Roll (Cont)	13511
Fig. 33	13646	Orange	177.8mm	10.0m	1 Roll (Cont)	13510
Fig. 33	13647	Orange	254mm	10.0m	1 Roll (Cont)	13510



Figure 33

BradyGlo™ High-Intensity Photoluminescent Tape (B-526)

Identification that glows in the dark for up to 10 hours!

- Ideal for marking emergency utility shut-offs, fire extinguishers, alarm pulls, and vital equipment controls

Service temp: -40°C to 60°C Application temp: 5°C to 60°C

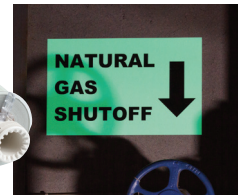


Diagram	Part No.	Colour	Label Width A	Roll Length B	Labels Per Roll	Rec. Ribbon
Fig. 33	105912	Luminous Green	101.6mm	10m	1 Roll (Cont)	13511 or 13595
Fig. 33	105913	Luminous Green	177.8mm	10m	1 Roll (Cont)	13510 or 13514
Fig. 33	105914	Luminous Green	177.8mm	10m	1 Roll (Cont)	13510 or 13514



Figure 33

Sign Panels

Create custom signs in minutes!

- Apply labels printed from your BBP®85 printer, to blank safety signs with pre-printed headers, to create professional custom signs for your workplace.
- Print text or pictogram, remove the liner, and apply to the blank sign panel.

Part #	Sign Panel	Size	Material
832527		600 x 450	Metal
841935		600 x 450	Polypropylene
832526		450 x 300	Metal
841936		450 x 300	Polypropylene
841938		300 x 225	Metal
841937	300 x 225	Polypropylene	
832521		600 x 450	Metal
841950		600 x 450	Polypropylene
832520		450 x 300	Metal
841951		450 x 300	Polypropylene
841953		300 x 225	Metal
841952	300 x 225	Polypropylene	
834071		600 x 450	Metal
841969		600 x 450	Polypropylene
834070		450 x 300	Metal
841970		450 x 300	Polypropylene
863514		300 x 225	Metal
841971		300 x 225	Polypropylene

Part #	Sign Panel	Size	Material
841963		600 x 450	Metal
863527		600 x 450	Polypropylene
841965		450 x 300	Metal
841964		450 x 300	Polypropylene
863526		300 x 225	Metal
841966	300 x 225	Polypropylene	
875040		600 x 450	Metal
875041		600 x 450	Polypropylene
875042		450 x 300	Metal
875043		450 x 300	Polypropylene
875044		300 x 225	Metal
875045		300 x 225	Polypropylene

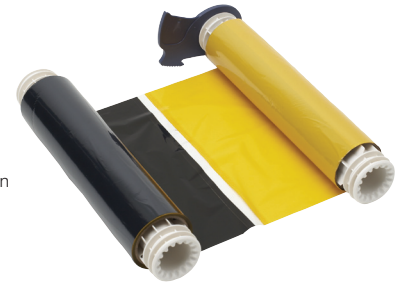
*more sign panel options available.

BBP®85 Printer Ribbons

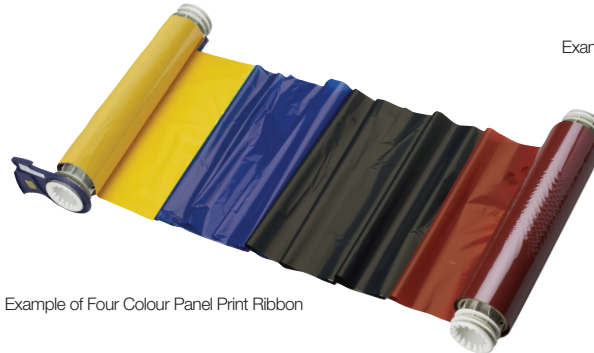
- Choose from a variety of heavy-duty, smear-proof ribbons, including single colour and multi-colour panelled ribbons. These ribbons are uniquely designed with memory cells that communicate information to the BBP®85 printer.



Example of Single Colour Print Ribbon



Example of Two Colour Panel Print Ribbon



Example of Four Colour Panel Print Ribbon

SINGLE COLOUR PRINT RIBBONS

Part No.	Colour	Size	Length
13511	Black	158.7mm	60.9 m
13510	Black	223.5mm	60.9 m
13513	White	158.7mm	60.9 m
13512	White	223.5mm	60.9 m
13595	Red	158.7mm	60.9 m
13514	Red	223.5mm	60.9 m
13596	Blue	158.7mm	60.9 m
13515	Blue	223.5mm	60.9 m
13597	Green	158.7mm	60.9 m
13516	Green	223.5mm	60.9 m
13598	Magenta	158.7mm	60.9 m
13517	Magenta	223.5mm	60.9 m
13599	Yellow	158.7mm	60.9 m
13518	Yellow	223.5mm	60.9 m
13600	Orange	158.7mm	60.9 m
13519	Orange	223.5mm	60.9 m

TWO COLOUR PANELLED PRINT RIBBONS

Part No.	Colour	Ribbon Width	Colour Panel Length	Overall Length	Typical Yield From Ribbon
203mm Panels used to create 2 colour signs up to 203mm long					
13523	Black & Red	158mm	203.2mm Panels	60.9m	One hundred 203mm long labels
13522	Black & Red	203.2mm	203.2mm Panels	60.9m	One hundred 203mm long labels
13527	Black & Yellow	158mm	203.2mm Panels	60.9m	One hundred 203mm long labels
13529	Black & Orange	158mm	203.2mm Panels	60.9m	One hundred 203mm long labels
13704	Black & Green	158mm	203.2mm Panels	60.9m	One hundred 203mm long labels
13706	Black & Green	203.2mm	203.2mm Panels	60.9m	One hundred 203mm long labels
381mm Panels used to create 2 colour signs up to 355mm long					
13521	Black & Red	158mm	381mm Panels	60.9m	Sixty 355mm long labels
13520	Black & Red	203.2mm	381mm Panels	60.9m	Sixty 355mm long labels
13525	Black & Blue	158mm	381mm Panels	60.9m	Sixty 355mm long labels
13524	Black & Blue	203.2mm	381mm Panels	60.9m	Sixty 355mm long labels
13526	Black & Yellow	203.2mm	381mm Panels	60.9m	Sixty 355mm long labels
13528	Black & Orange	203.2mm	381mm Panels	60.9m	Sixty 355mm long labels
13705	Black & Green	158mm	381mm Panels	60.9m	Sixty 355mm long labels
13707	Black & Green	203.2mm	381mm Panels	60.9m	Sixty 355mm long labels

FOUR COLOUR PANELLED PRINT RIBBONS

Part No.	Colour	Ribbon Width	Colour Panel Length	Overall Length	Typical Yield From Ribbon
203mm Panels used to create 4 colour signs up to 203mm long					
13533	Black/Red/Blue/Yellow	158mm	203.2mm Panels	60.9m	Fifty 203mm long labels
13532	Black/Red/Blue/Yellow	203.2mm	203.2mm Panels	60.9m	Fifty 203mm long labels
13537	Black/Red/Blue/Green	158mm	203.2mm Panels	60.9m	Fifty 203mm long labels
13536	Black/Red/Blue/Green	203.2mm	203.2mm Panels	60.9m	Fifty 203mm long labels
51448	Black/Red/Orange/Blue	203.2mm	203.2mm Panels	60.9m	Fifty 203mm long labels
381mm Panels used to create 4 colour signs up to 355mm long					
13531	Black/Red/Blue/Yellow	158mm	381mm Panels	60.9m	Thirty 355mm long labels
13530	Black/Red/Blue/Yellow	203.2mm	381mm Panels	60.9m	Thirty 355mm long labels
13535	Black/Red/Blue/Green	158mm	381mm Panels	60.9m	Thirty 355mm long labels
13534	Black/Red/Blue/Green	203.2mm	381mm Panels	60.9m	Thirty 355mm long labels

The BBP[®]85 Sign and Label Printer:

Big, bold and better than ever.

PRINTER AND ACCESSORIES

Part No.	Description
874031	BBP [®] 85 Printer
142268	Network Card - Bluetooth [®] /WiFi/Ethernet
133174	Dust Cover
64692	Cleaning Pen
874035	Stylus Pens (3 pack)
874034	USB Cable

*BBP[®]85 Sign & Label Printer ships with printer, markware software, wifi & ethernet network card, power cord, USB cable, drivers CD, stylus, cleaning kit, quick start guide and user manual.

BBP[®]85
LABEL PRINTER



Printer Specifications

BBP [®] 85 Specifications	
Printing Dimensions	Up to 216mm printable width. Minimum label length (cut): 51mm. Maximum label length (continuous media): Single Colour 4.8m, Multi-colour: 35cm - by using panelled ribbons, and Multi-colour: 76cm - by swapping monochrome ribbons.
Label Types	Continuous & Die Cut
Print Colour	Single Colour and Multicolour
Print Resolution	300dpi print resolution
PC Connectivity	Yes - connect to PC via USB, ethernet or wireless card. Able to be used with MarkWare [™] Software
Stand-Alone Design	Yes with the full colour 7" built-in display and keyboard
File Storage	56MB Internal Storage. USB port for external memory
Font Styles	4 built into printer. Import more via USB port. 100's available with Markware [™] Software
Templates Library	Yes in-built ready made library with full range of templates for all major safety, facility and pipemarking applications
Serialisation Function	Yes
Barcode Function	Yes
Symbols	600+ built into printer, 1000's when used with MarkWare [™] Software Import your own images and logos via USB port
Power Supply	Power Cord included
Printer Dimensions And Weight	490 mm H x 310 mm W x 500 mm D / 22kg

BLS1255 Laminating System

Quickly mount BBP[®]85 output to rigid sign blanks...
takes only seconds!

Laminating Options:

- Mount label to a rigid plastic or metal sign panel
- Overlaminates documents with a single or double-sided flexible, clear overlaminate

Part No.	Description
105038	BLS1255 Laminating System
105041	304mm x 15m Double-sided polyester overlaminate



Brady Australia Pty Ltd
Phone: 1800 620 816
Fax: 1800 805 076
www.bradyID.com.au

BRADY
WHEN PERFORMANCE MATTERS MOST[™]